

AUCTION

ONSITE AUCTION

SATURDAY, JUNE 22nd, 2024 — 10:00 AM

753 Coyote Road, TORONTO, KS ~ From Hwy. 54/105 Jct. (Lizard Lips Grill & Deli - Country Junction Store), 2 miles east, ½ mile south
OR 19½ miles east of Eureka OR 11 miles west of Yates Center Jct. 54/75. **Watch for Signs.**

PICKUPS ~ CARS ~ TRUCKS

2009 Lincoln "MKZ" 4-dr. Car, 6-cyl., auto., 17" alum. whls., tan, 159,000 miles RUNS * Chevrolet "Custom Deluxe 10" 4x4 Pickup, 4.1L inline 6-cyl, 4-spd, wood flat bed, (GN ball mount dual spike bale Spear) * 1979 Ford "F-600" Truck, v-8, 4-spd. 8.25-20 rubber, 52,409 miles, Sudenga "4T1069" 4-ton feed delivery Bed * Ford "F-600" dump Truck, 10' steel bed, V-8, 4-spd., 9.00-20 rubber, 32,476 miles * 1958 "3100" Chevrolet "3100" step side Pickup * 2007 Chevrolet "Uplander LT" mini Van, V-6, auto., 17" rubber, wrecked * 1986 Nissan "200x" 2-dr. Car, automatic * 1986-92 Jeep "Comanche Custom" 2-dr. PU, 2.5L inline, 086,541 miles * 1985 Dodge "Power Ram 2500 Custom" 4x4 Pickup, 5.2L, 4-spd., 78,364 miles * HiJet mini Pickup, 5-spd, RH drive * 1973 Ford "Custom" Pickup, 4-spd., 16,396 miles, 2-tone blue * Ford "Ranger XL" extended cab Pickup, 79,979 miles, brown * 1982 Datsun King Cab Pickup * 1990 Ford "Ranger XLT" 4x4 Pickup, 2.9L V-6, 5-spd, red/silver, 235/75R15 rubber * 1941-47 Ford Truck w/94"x13'6" flat bed, flat head 6-cyl, 4-spd, 7.50-20 rubber, 67,021 miles * 1970 Ford 4-dr. Car * 1972 Ford "Gran Torino" 4-dr. Car * 1998 Toyota "Camry LE" 4-dr. Car, wrecked * 2000 Nissan "Altima GLE" 4-dr. Car, wrecked * 2003 Mitsubishi "Endeavor XLS" 4-dr. SUV, 3-cyl., auto., 235/65R17 rubber * 1968-72 Chevrolet "C10" Pickup, 6-cyl., 3-spd. VIN #CS147 J 105393 * GMC "4000" dually Truck w/gin pole, V-6 mtr., 9.00-20 rubber * Ford "F-100" 4x4 Pickup, 6-cyl, 4-spd. * Truck Bed 94" x 13'6", wood floor & 28" stl. Grain sides mounted on Wagon w/hoist * PU Flat Bed 86"x99"

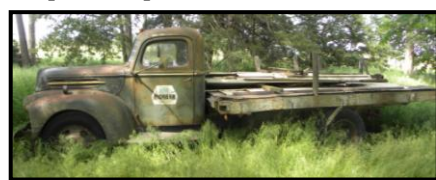
TRACTORS

1979 MF "255" Tractor, Perkins 4-cyl. dsl., 12-spd. Trans., 42-hp DB, 50-hp PTO, 3-pt., dual hyd., PTO, 16.9-28 rubber, rear whl. Weights, 3,036 hrs., Ser. #9A323504 (shedded, runs) 1957-1964 MF "65" diesel Tractor, Perkins 4-cyl., 54.5-hp engine, 13.6-38 rubber, 3pt., single hyd., PTO, 1,955 hrs. (shedded, runs) 1963 Case "930" Comfort King Tractor, JI Case 6.6L 6-cyl. dsl, 70-hp DB, 80-hp PTO, rear whl. weights, 18.4-34 rubber, 5,424.2 hrs., 6-spd. Trans., no 3-pt. or PTO, dual hyd., Ser. #8216593, runs 1985 Ford "2910" Tractor, 3-cyl. Dsl., 8-spd, dual hyd. 3-pt., PTO, 14.9-26 rubber, 2,359 hrs., Ser. # C736334, runs

1958-1959 Case "802-B Western Special" Case-o-matic Tractor w/front end loader w/bale spear, JI Case 4.4L 4-cyl., 54-hp belt, 8-spd. Torque converter, 18.4-30 rubber, PTO, dual hyd., no 3-pt., 1,672.1 hrs, Ser. #8122642 1956-1958 Case "301" Tractor, 4-cyl dsl., no tires 1939-1953 Case "DC3" Tractor, narrow front, JI Case 4.3L 4-cyl. gas, 33-hp DB, 37-hp PTO, single hyd., 13.6-38 rubber, rear whl. weights, (1 tire good & 1 rim/ tire no good 1949 JD "B" NF Tractor, 3.1L 2-cyl. 25-hp DB, 12.4-38 rubber, PTO, Ser. # 251004 1948 JD "B" NF Tractor, 11.2/10-38 rubber, Ser. #229410, poor 1936 JD "B" NF Tractor, steel spoked rims, 9-36 rubber, Ser. #17007, unstyled 1947 JD "D" Tractor, 8.2L 2-cyl. Gas, 38-hp DB, 14-30 rubber, rear whl. weights, PTO, no hyd., Ser. #R166209 1936 AC "WC" NF Tractor, spoke wheels, 13-24 rubber, Ser. #WC13975, poor cond. 1981 Allis Chalmers "5020" Tractor, 3-pt., PTO, 11.2/10-24 rubber, 2-cyl. dsl., 25-hp Allis Chalmers Tractomotive "TractoLoader" Tractor, 4-cyl. Gas

HAYING EQUIPMENT

Vermeer "Rebel 5400" round Baler, shedded * Gehl "1600" round Baler * Hesston "1014" hydroswing 14' Swather * NH "469" 9' Mower/Conditioner * NH "456" 9' sickle bar Mower w/hyd. cyl. * NH Stackliner "1002" sq. bale Stackwagon, pull type, PTO * Kelderman Mfg. 10-whl. Carted Rake * Rake Wheels * Case side delivery Rake * Pop-up bale Loader * IH "47" Sq. Baler * NH "271" Hayliner sq. Baler * McCormick International "47" Demonstrator sq. Baler * Case "135" sq. Baler * Versatile 14' 3-whl. Swather, Ford 6-cyl. Mtr. * Bale Spear * 3-pt. bale Spear * 6 rolls baler Twine



TRAILERS ~ LIVESTOCK EQUIPMENT ~ FENCING

Hillsboro 20' GN livestock Trailer * GN 5½'x20' livestock Trailer, 15" rubber, center gate, good floor * 1976 Bumper hitch 5½' x 16' livestock Trailer * King Mfg. 22' single axle bumper hitch bale Trailer * GN 8-bale Hay Trailer * HD flat bed Trailer, 7'x16', 2 5/16" hitch * PU bed Trailer * Flatbed truck bed Trailer, single axle, 8.25-20 rubber * Priefert port. Chute w/man. head gate * 41 Winkle 10' cattle Panels * Cattle Panel Trailer * (6) 12' cattle panels * (4) 12' metal Gates * 6 rnd. bale Rings (1 new Priefert) * (5) 11' plastic bottom feed Bunks * Hastings dbl. side calf creep Feeder * 4' liquid feed Tank * Pond Windmill * Welded wire calf Crate * 6 rolls 48" woven Wire (6"x6") * 4 rolls new barb Wire * Approx. 300 new 6' steel Posts, green * Approx. 25 new 5½' steel Posts, orange * Approx. 50 used steel Posts * 50-gal. Sprayer w/B&S Motor * 25-gal. Sprayer * Rubber stock Tank * Calf Catcher * Wizard 12V elec. Fencer

FARM MACHINERY

AC Gleaner "E" 12' Combine, Ser. # E-19515, shedded * AC Gleaner "K2" 12' Combine, 18.4-26 rubber, Ser. #K24520 * AC Gleaner "E" Combine, 2 row 40" corn head, LF tire missing * Crustbuster 24' Springtooth w/hyd. cylinder, 4 tires * JD "210" 13' offset Disk w/hyd. cyl. * JD 10' HD offset Disc w/hyd. cyl., 21" front & 22" back disc * Keweenaw 9' offset Disc w/hyd. cyl. * Krause "408" 9' offset Disc * King Kutter 3-pt. 6' finish Mower * JD 2-row Planter on rubber * IH 4-row Planter, 32" * Case 16-7 Drill * IH 16-7 Drill * Pipe & wood Drag * Pull behind 150-gal. Sprayer w/Delavan PTO pump * Pull behind Sprayer Tank & hose * (2) 3-sect. 17' drag Harrows * AC 3-pt. 4-row Cult. * JD 3-pt. "RG4" 4-row Cult. * AC 3-pt. 2-16 Plow * 3-pt. 6' adj. angle Blade * 3-pt. PTO post hole Auger * PTO 7' sickle Mower on whls. * Servis 5' rotary Mower * Bush Hog "256R-2" 3-pt. 6' rotary Mower, laminated tires * Case 4-14 Plow on rubber * 12' Chisel * Case ground drive manure Spreader * JD "33" PTO manure Spreader * 3-14 Plow on rubber * 3-pt. 2-14 Plow * 3-pt. 2-12 Plow * 3-pt. 8' PTO Disc Mower * 7' Chisel * (2) 3-pt. trip Buckets * Brillion "6800" 8' Seeder, seed boxes good, cultipacker wheels * 8' Tandem Cultipacker * JD "SNE0033" 9' sickle Mower * 15' Hay Elevator * GT by Gilmore 6"x34" grain Auger, PTO * 6"x29" grain Auger w/gas mtr. * JD "301" fertilizer Spreader * Post hole Auger * Peerless grain Grinder on skid w/ Wisconsin 4-cyl. mtr. * Sprayer frame w/motor, pump & hose * 3-pt. mister Blower, no tank * Running gear off anhydrous/fertilizer Tank * (3) Wagon running Gears * (2) 18.4-26 tires on JD 8 hole rims * Tractor whl. Weights * Hyd. Cyl. * Air-O-Vac * Other Items



SKID STEER ~ TRENCHER ~ ATV

IH Honey Bee "140" skid Steer, 42" bucket, 4-cyl. Gas, 9.25-24 rubber, Ser. #62453HB865 * Davis Fleetline "30+4" Trencher w/backhoe & blade, Ser. #042B5242 * Polaris 6x6 ATV, unknown condition * 4-cylinder Motor on 2-whl. Trailer * Wisconsin 2-cyl. Mtr. w/Rockford/Borg Warner clutch * Craftsman 38" riding Mower, 11-hp, 5-spd. * Riding Mowers incl. JD "314" * Power-Trim gas Trimmer on whls. * Murray & Snapper push Mowers * Tillers incl. Rally rear tine & 2 front tine * Garden Planter * Other Items

WELDER ~ CHAIN SAWS ~ TOOLS

(will sell starting at 10:00 am)

AC 225 Welder * Shindaiwa "360" chain Saw * Stihl chain Saw * Sanborn 1-hp air Compressor * Makita 14' metal chop Saw * Big Red Equip. Co "6101A" elec. Cement Mixer * (2) alum. ext. Ladders * Alum. & Wood Ladders * Air Tank * Vise * Pipe Vise * Metal Car Ramps * Floor drill Press, old * Grinder * Air Tank 8" Tools * Jacks * Century battery Charger * Elec. Grinder * Rivet Tool * Power Pull * Bolt Cutters * Misc. Tools & Parts * Gas Jugs * Alum. cross bed tool Box * Trailer Jack * Bumper Hitches * 100# propane Bottle * (2) 20# propane Bottles * Live animal Trap * Alum. scoop Shovel * Potato Fork * Pitch Forks * Axe * Other Items

ANTIQUE MACHINERY ~ VINTAGE ITEMS

Fairbanks-Morse "118" & 208" Motors * 2 Corn Binders on stl. Whls. * Osborne horse drawn 6' sickle Mower on stl. Whls. * Steel whl. RR Cart * Steel Wheel * Metal impl. Seat * Galv. Oil/gas 5-gal. Can * Steel Traps * Child's Wagon * Other Items

Visit alanjohnsonrealty.com
to see more pictures!

BLDG. ~ PIPE ~ RR PLANKS ~ SALVAGE ITEMS

Portable metal Building, 6 metal trusses (30' wide) & 10 wall sections (8' & 10' wide) * Approx. 50 pcs. 2½" Pipe, various lengths * (4) 3½" Pipe * (12) 4"x6"x8" galv. I Beam (guard rail posts) * 17 elec Poles approx. 30-32' * Hedge Posts * (12) 8"x16" bridge Timbers, approx. 23½' * RR Planks * Barn Metal, corrugated & newer style * Hesston "420" SP Swather * NH "901 or 902" SP Swather, 3-whl. * Owatonna SP Swather * Metal storage tank * 23+ Batteries * 7+ Radiators * Generators/Alternators * Lot of used tractor, truck & vehicle Tires & Rims Chain link dog Pen, (2) 14' * 4 Grader cutting edge Blades, 5', 6' & 7' * 3 fuel storage Tanks on stands * Fuel/water Tank * 1" poly Pipe * Other items

AUCTIONEERS NOTE

This auction has some unique antique & vintage vehicles, tractors & machinery. **Most items are in non-working condition or have not been used for a long time.** No buyer's premium! Not responsible for accidents. Announcements day of sale take precedence. **Please plan to join us!** Loader available day of sale only. Terms: Cash or Check. Lunch Available.

HARRY & YVONNE NORDMEYER ESTATE

Alan Johnson
Broker

620-750-0093

Lane Johnson
Associate Broker

620-750-0217



JOHNSON
REALTY

www.alanjohnsonrealty.com

620-583-7693 ~ 1901 E. River, Eureka, KS 67045



AUCTIONEERS

Gene Walter
620-222-4873

Dean Patterson